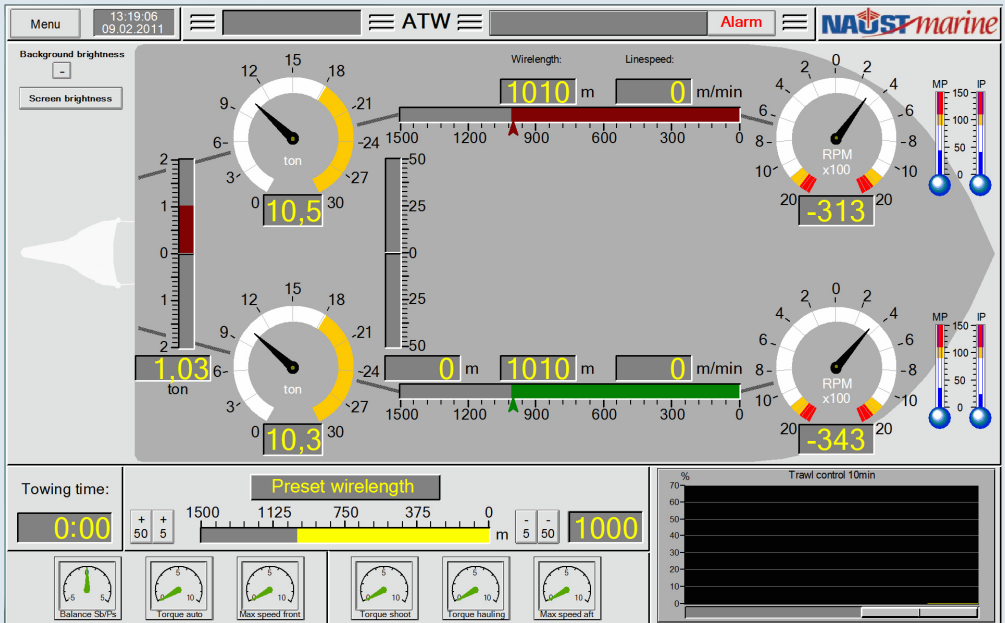




Introduces a new HMI for the ATW Catch Control system



Key benefits of the new HMI:

- Clear picture and easy to read.
- Better overview over the system.
- Easy connection to the Internet for maintenance and settings of the ATW system.
- Automatic scaling of tension and wire length.
- Available for wide screen and older screen types.
- Possibility of adding reading of cable winches.

Older systems from Naust Marine can be updated with the new HMI.